

# U 96

---

# U-BOAT

## Pack 10

### Assembly Instructions

**Kit 37: Aft central bulkhead**

**Kit 38: Command room deck**

**Kit 39: Navigation table**

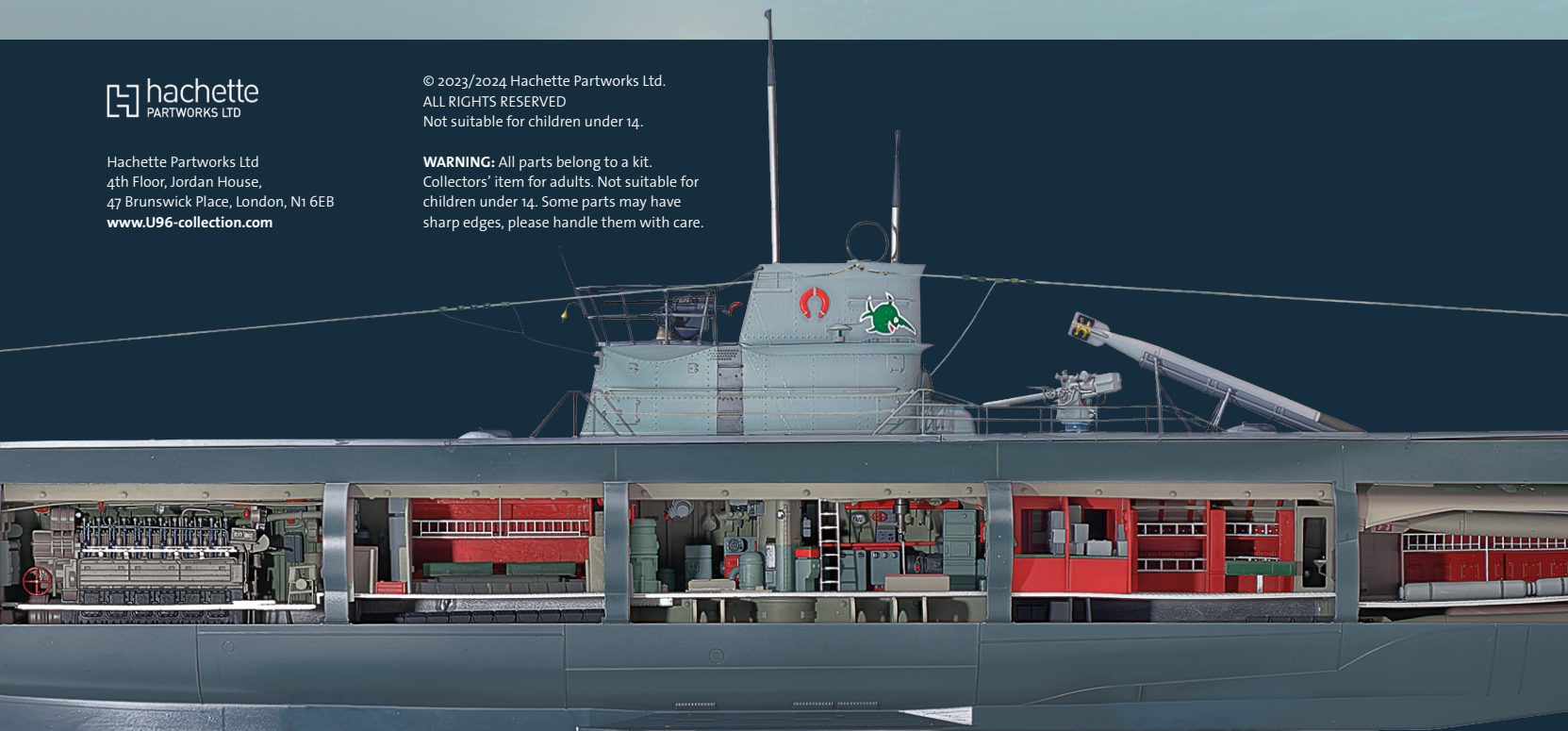
**Kit 40: Auxiliary bilge pump**



Hachette Partworks Ltd  
4th Floor, Jordan House,  
47 Brunswick Place, London, N1 6EB  
[www.U96-collection.com](http://www.U96-collection.com)

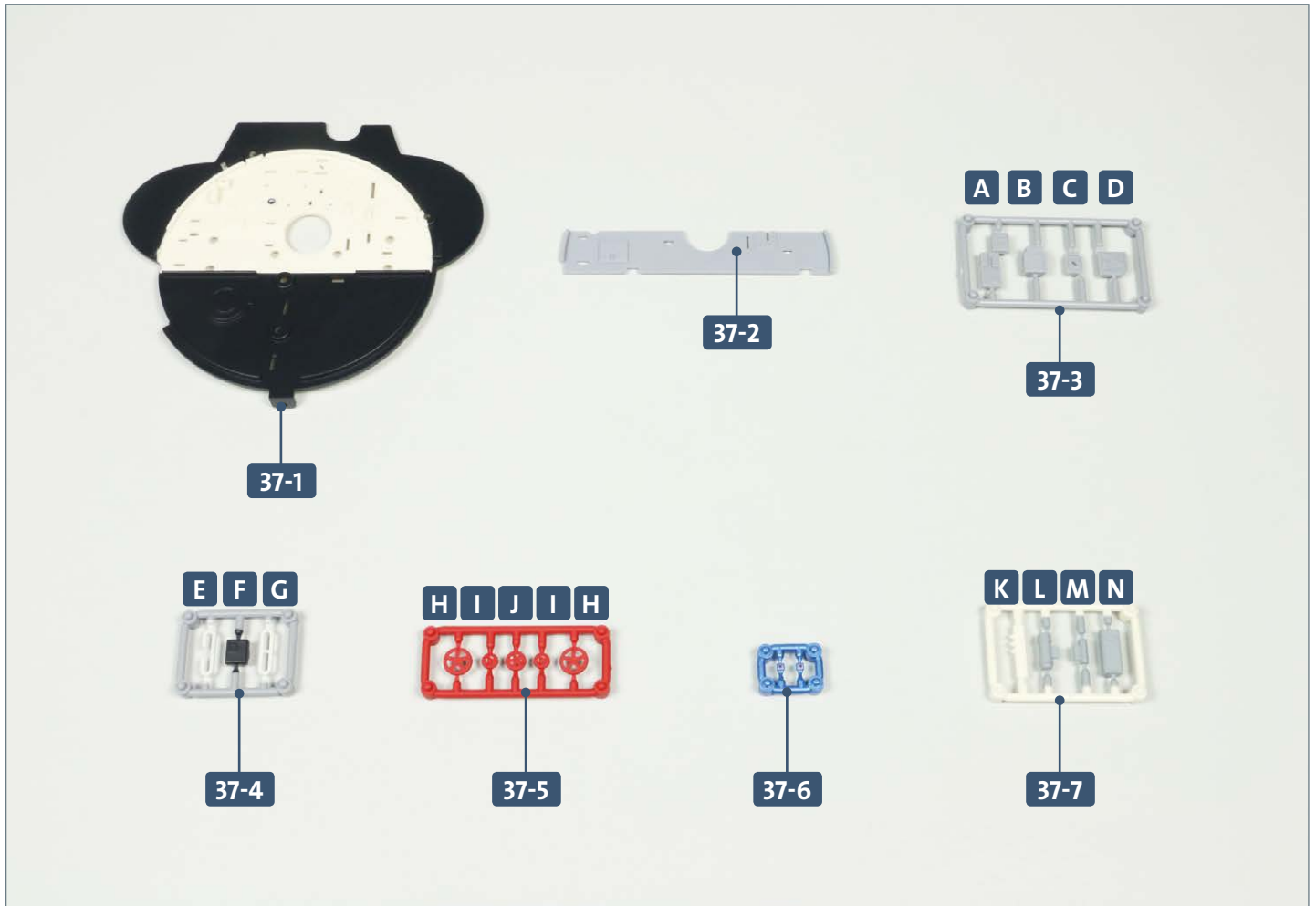
© 2023/2024 Hachette Partworks Ltd.  
ALL RIGHTS RESERVED  
Not suitable for children under 14.

**WARNING:** All parts belong to a kit.  
Collectors' item for adults. Not suitable for  
children under 14. Some parts may have  
sharp edges, please handle them with care.



# Kit 37: Aft central bulkhead

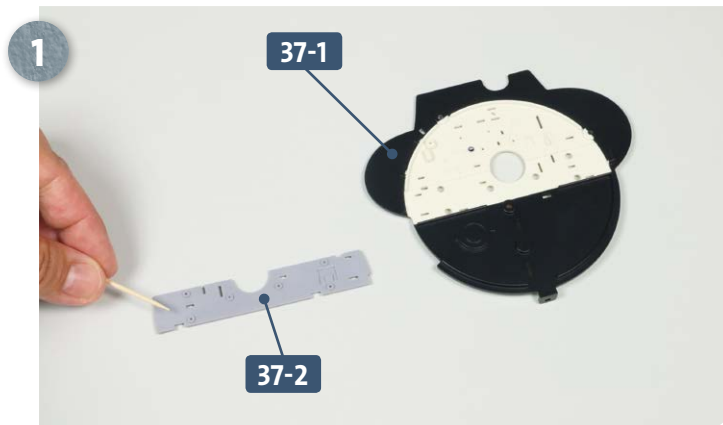
Assembly of the third compartment continues with handwheels, light switches and various other additions attached to the aft central bulkhead.



Parts reference list	
Part no.	Name
37-1	Aft central bulkhead
37-2	Mounting plate for aft central bulkhead
37-3	Frame (A, B, C, D)
37-4	Frame (E, F, G)
37-5	Handwheels (2 x H, 2 x I, J)
37-6	Light switches
37-7	Frame (K, L, M, N)

## Kit 37: Aft central bulkhead

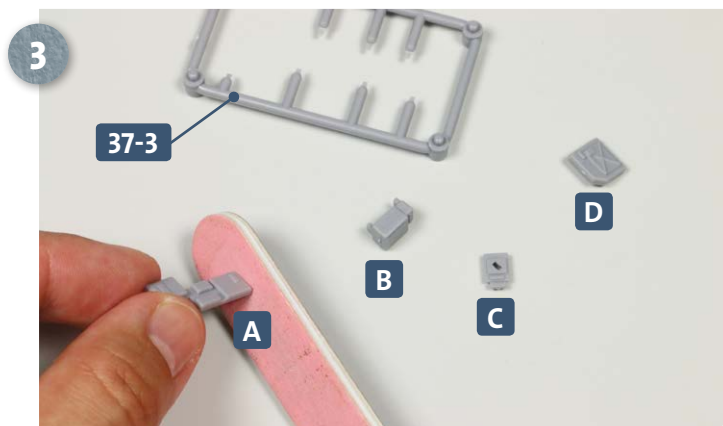
### STAGE 1 → The aft central bulkhead



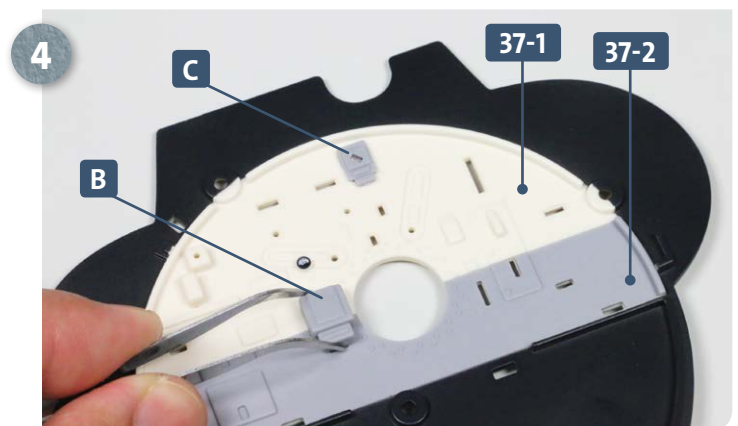
Place the aft central bulkhead **37-1** and the mounting plate **37-2** (back side facing up) on your work surface. Apply some glue to the pegs on the back of the mounting plate **37-2**.



Glue the mounting plate **37-2** to the aft central bulkhead **37-1**, as shown above.



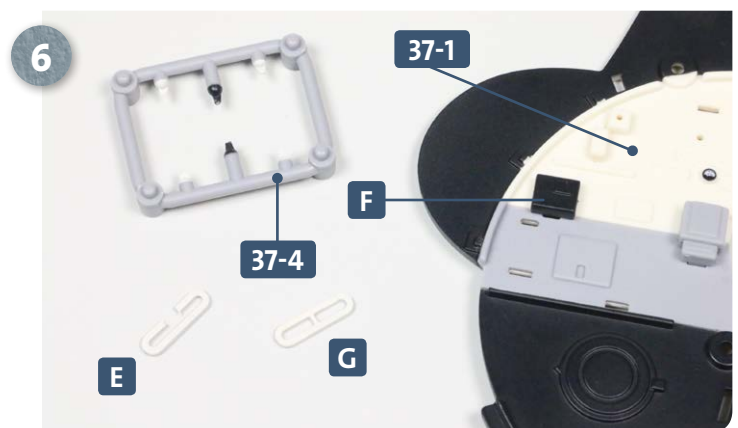
Take frame **37-3** and when needed, detach parts **A**, **B**, **C** and **D**. Remove any remnants of the attachment points from the pieces.



Parts **B** and **C** are glued into their corresponding slots in the central bulkhead assembly **37-1**, as shown.



Glue parts **A** and **D** to the right side of the bulkhead **37-1** using a little glue.

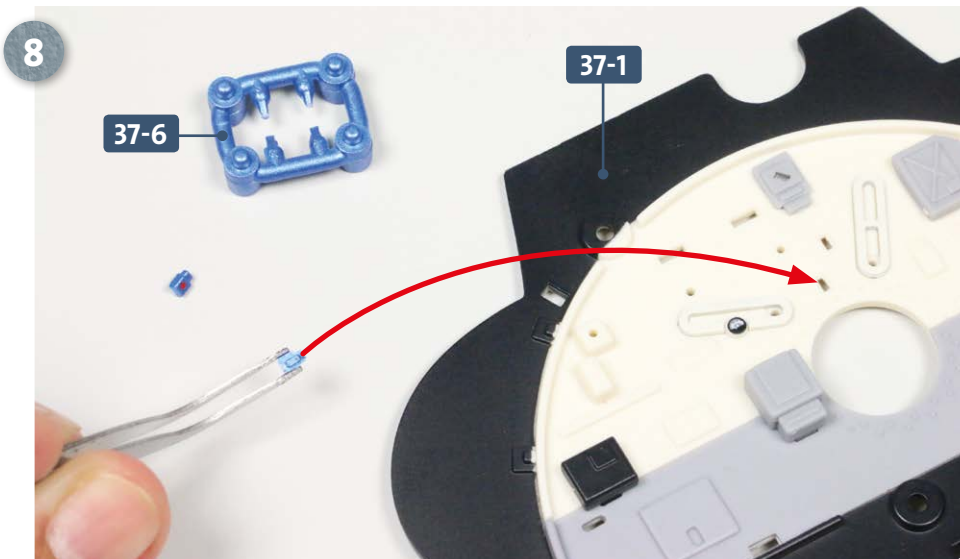


When needed, remove parts **E**, **F** and **G** from frame **37-4** and remove any trace of the attachment points. Glue part **F** to the left of the bulkhead **37-1**, as shown.

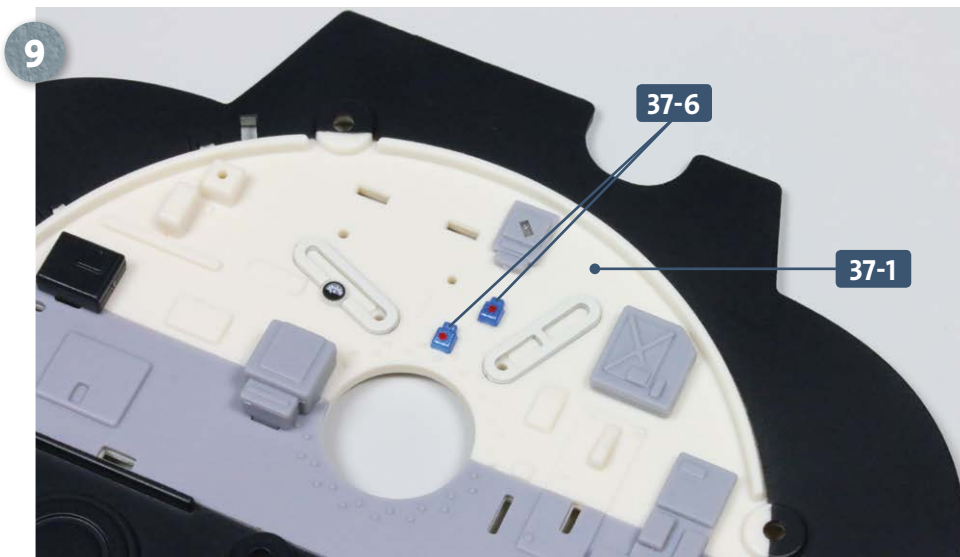
## Kit 37: Aft central bulkhead



Apply some glue to parts **E** and **G** and attach them to the aft central bulkhead **37-1**. Study the photograph to ensure their correct alignment.

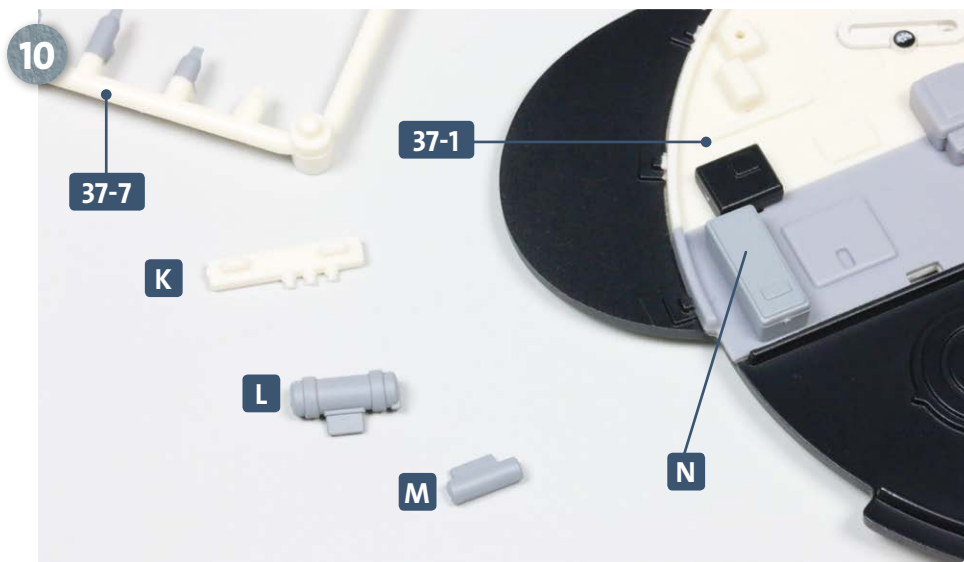


Take frame **37-6** and remove both light switches from it. Apply some glue to the peg on the back of the first light switch and insert it into the slot in the aft central bulkhead **37-1**, as shown by the arrow.

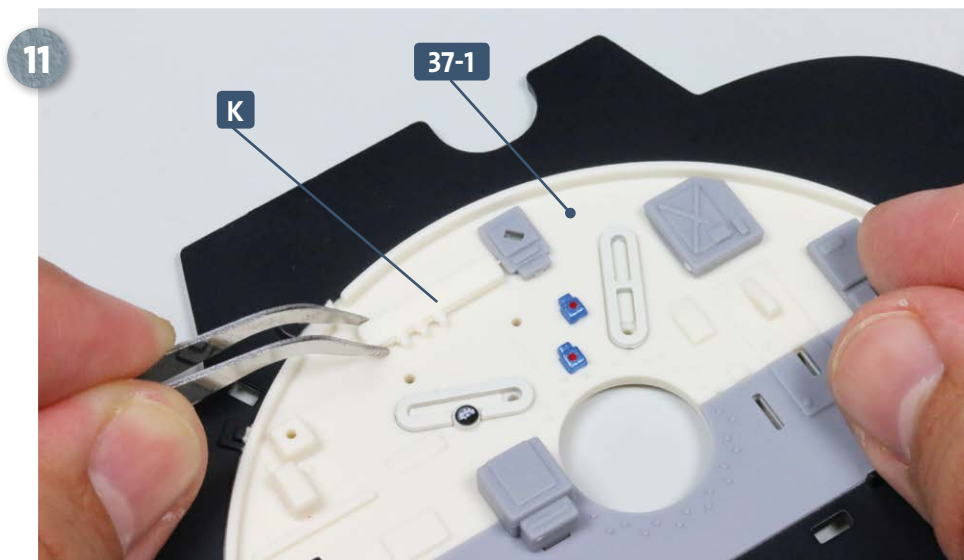


Repeat the process with the second light switch **37-6**, gluing it to the bulkhead **37-1**. The photo, left, shows both switches in the correct position.

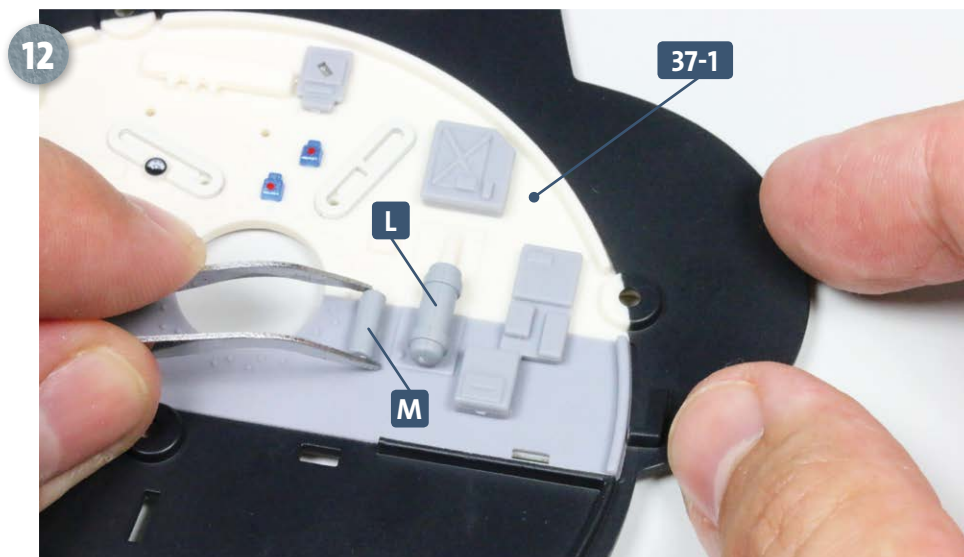
## Kit 37: Aft central bulkhead



Take frame **37-7** and when needed, detach parts **K**, **L**, **M** and **N**. Remove any trace of the attachment points. Apply some glue to both pegs of part **N** and attach to the left of the central bulkhead **37-1**, as shown.

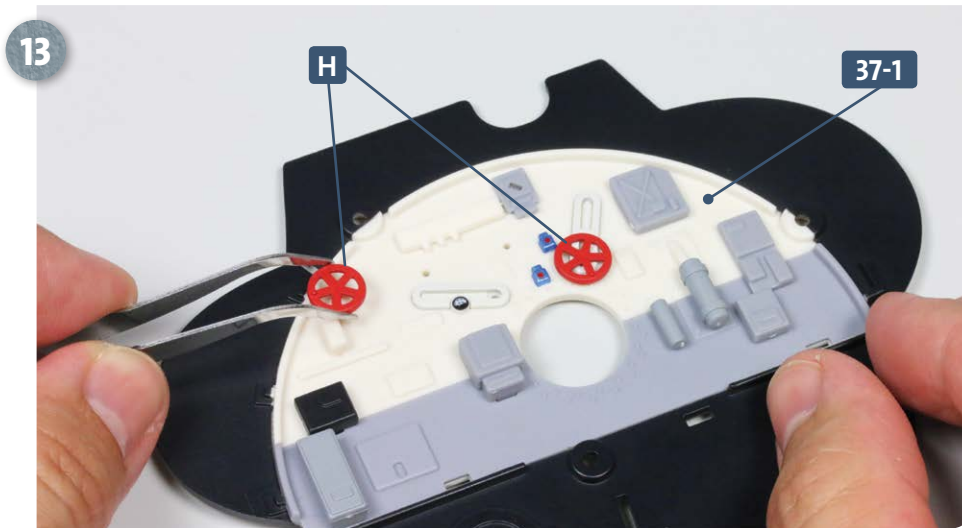


Part **K** is glued into the two small horizontal slots in the upper part of the central bulkhead **37-1**.

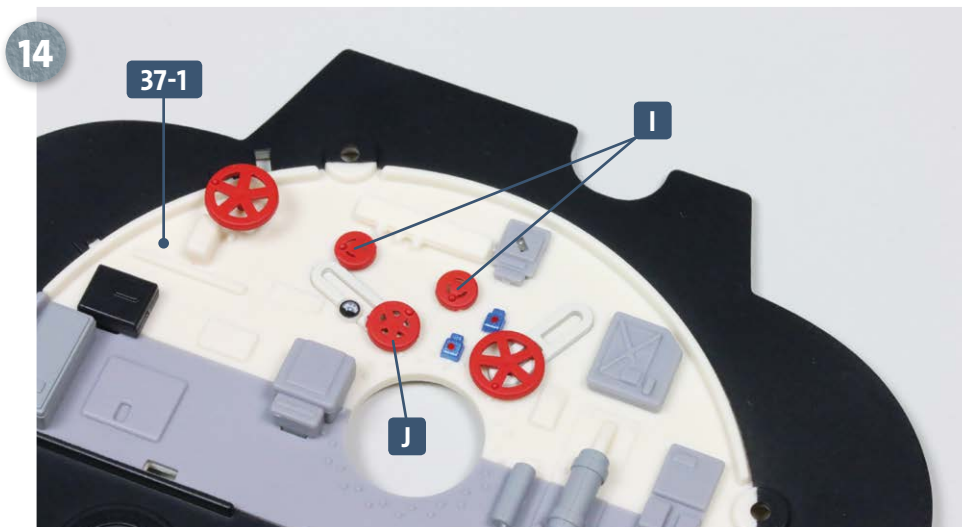


Parts **L** and **M** both belong on the right side of the bulkhead assembly **37-1**. Apply a little glue to the peg on the back of each part and insert into the corresponding slots. If necessary, slightly reduce the size of the pegs with a small file or similar.

## Kit 37: Aft central bulkhead



Finally, the handwheels from frame 37-5 are fitted. First, detach the two large handwheels H and glue them to the upper part of the central bulkhead 37-1, as shown.



Detach the two handwheels I and handwheel J from frame 37-5. The three wheels are likewise glued to the upper part of the aft central bulkhead 37-1, as pictured.

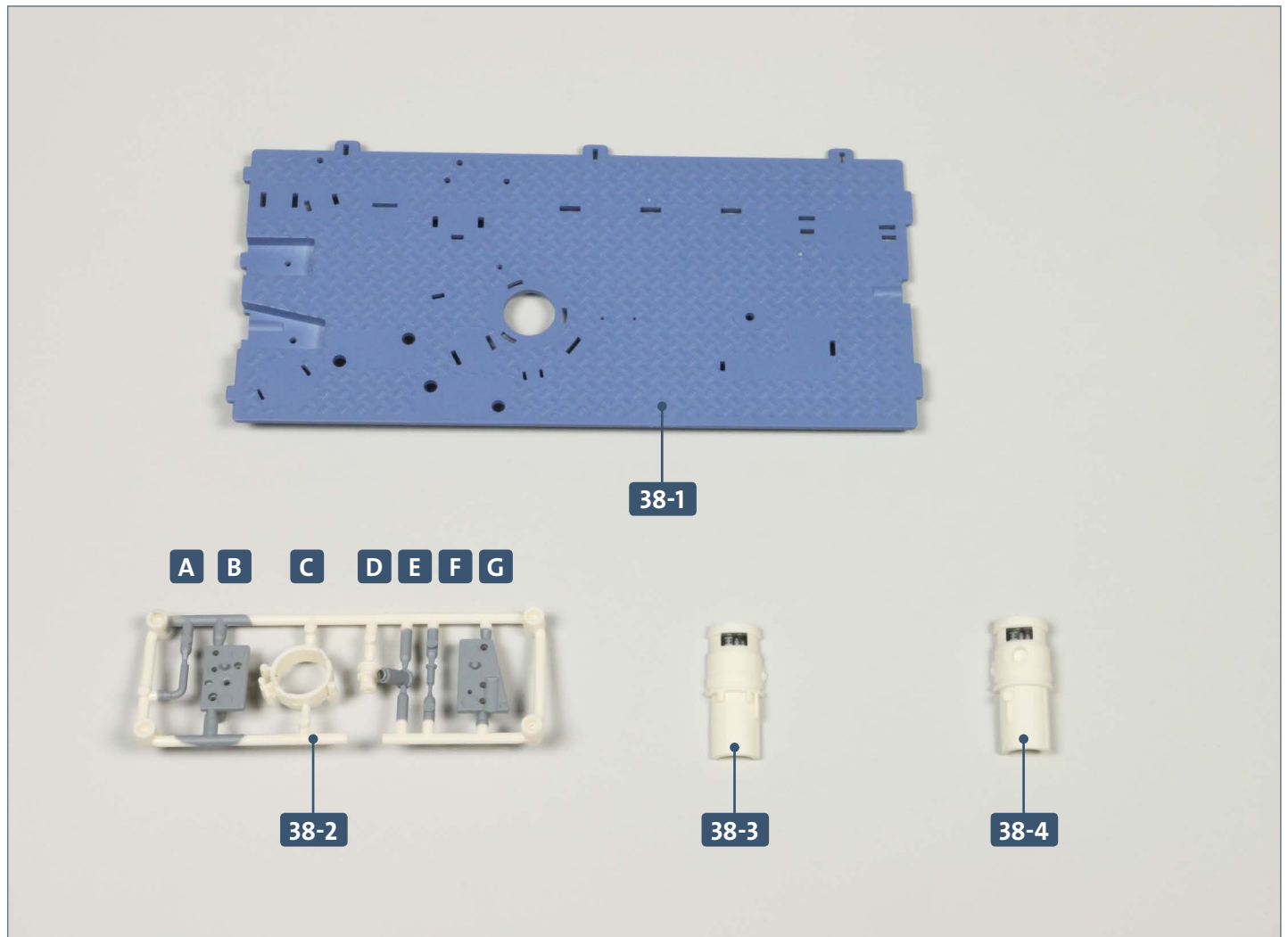
### COMPLETED WORK



The photograph shows the aft central bulkhead with the handwheels and light switches added, plus other details.

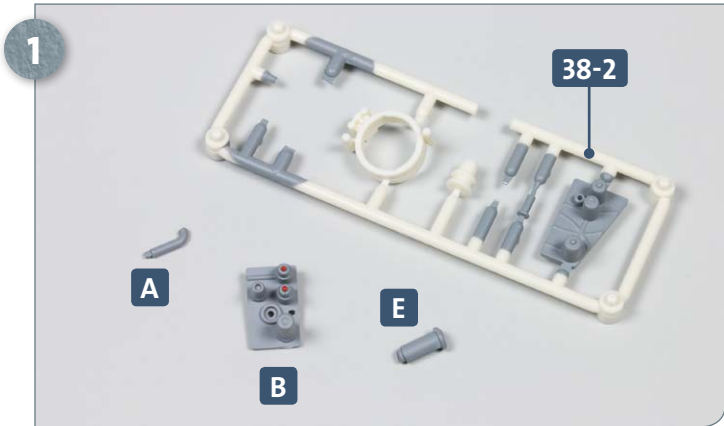
# Kit 38: Command room deck

Assembly of the central compartment continues with the addition of the deck, to which are attached the main bilge pump, the auxiliary bilge pump, distributors and flood valve.

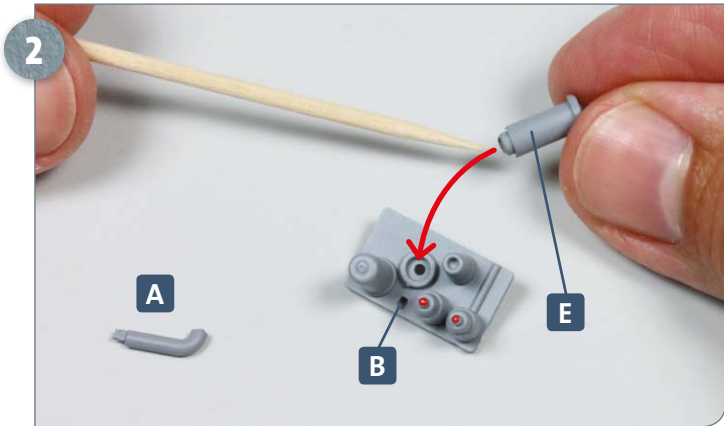


Parts reference list	
Part no.	Name
38-1	Command room deck
38-2	Frame (A, B, C, D, E, F, G)
38-3	Main bilge pump
38-4	Main bilge pump

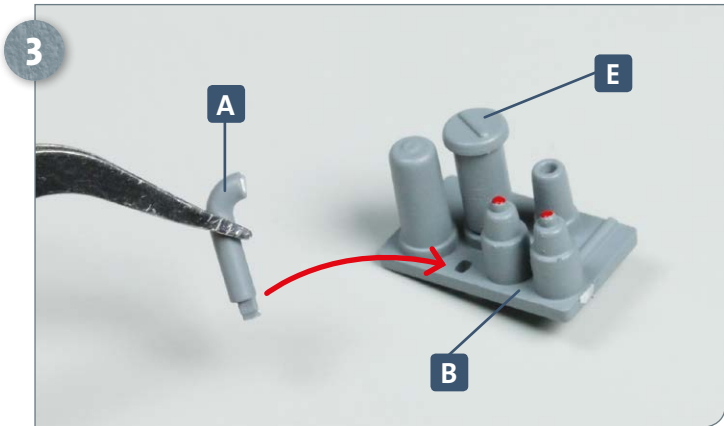
**STAGE 1** → Command room deck



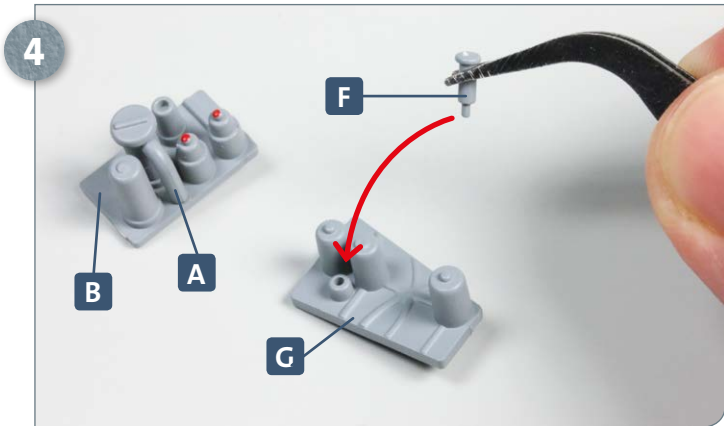
Take frame **38-2** and in addition to parts **A** and **E**, detach the valve and distributor deck **B**. Take care not to remove the peg at the base of part **A**. See also step 3.



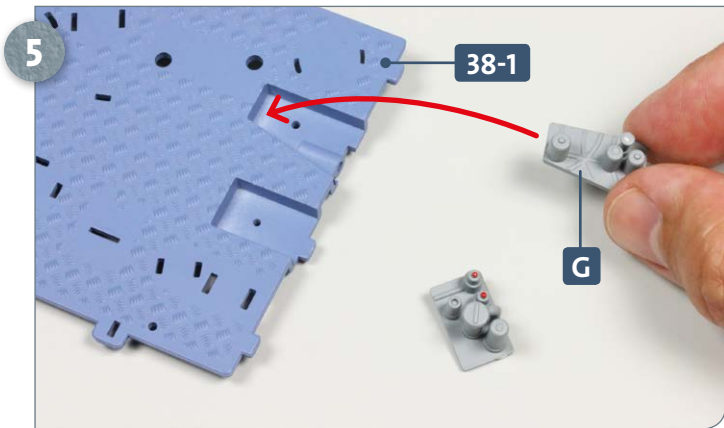
Apply some glue to the peg of part **E** as shown above. Glue into the central hole of the flood and bilge distributor **B**, as indicated by the arrow.



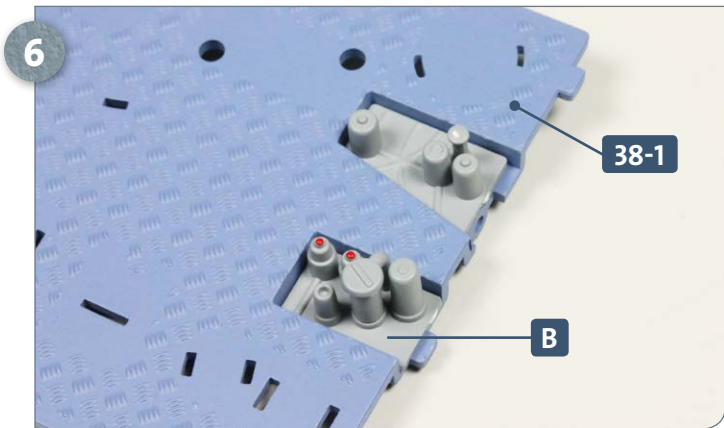
Now apply some glue to the peg of part **A** and insert it into the hole in **B**, as indicated by the arrow.



Separate the flood and bilge distributor of auxiliary bilge pump **G** and part **F** from frame **38-2**. Apply glue to the peg of part **F** and insert into the hole of part **G**, as shown.



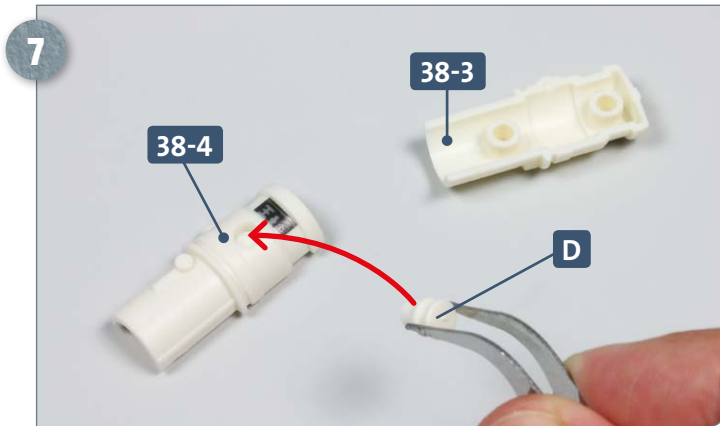
Place the command room deck **38-1** on your work surface. Take part **G**, apply some glue to the underside and fit it into the corresponding recess, as indicated above.



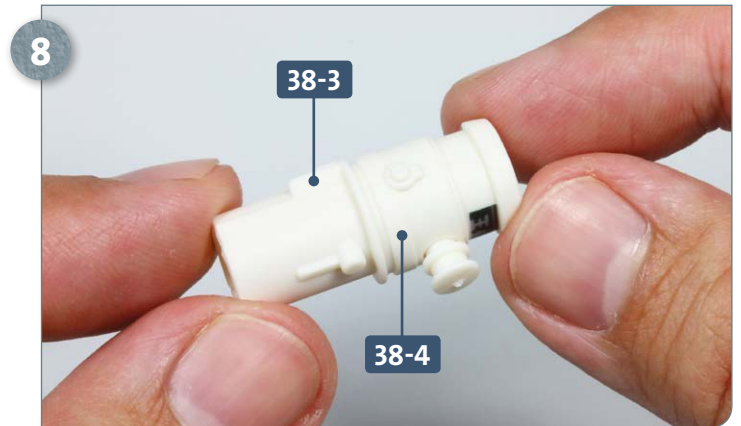
Glue part **B** into the other recess at the aft end of the command room deck **38-1**, as shown above.



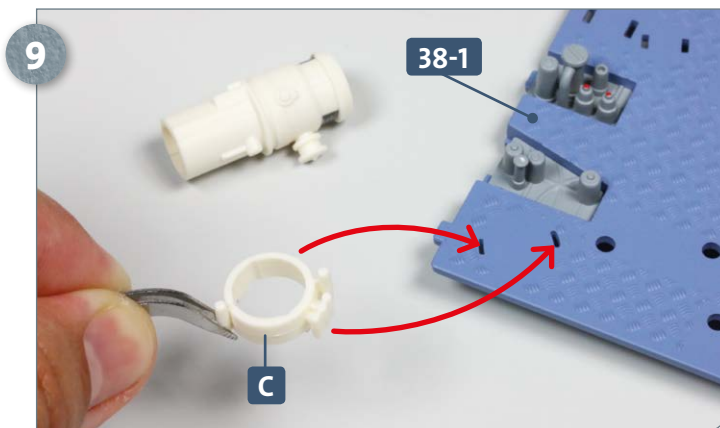
## Kit 38: Command room deck



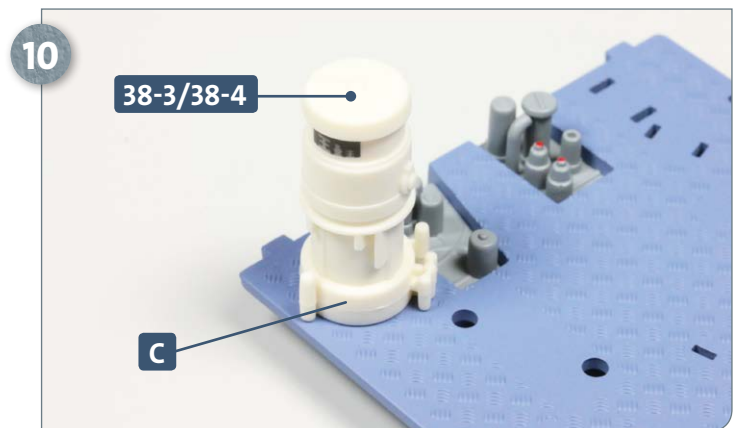
Take both halves of the main bilge pump, **38-3** and **38-4**, and part **D** from frame **38-2**. Apply some glue to part **D** and fix it into the recess of **38-4** as shown.



Apply some glue to the contact surfaces of the two halves of the bilge pump, **38-3** and **38-4**, and fit them together as shown.

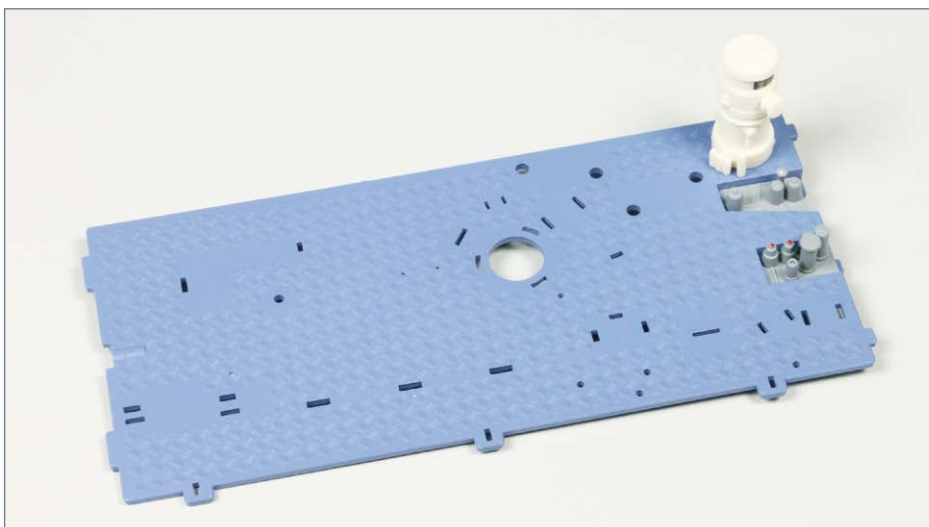


Detach part **C** from frame **38-2**, apply some glue to the two pegs on the underside, and fit these into the slots in the command room deck **38-1**, indicated by the two arrows. See also the next step to check the orientation.



Glue the main bilge pump assembly **38-3/38-4** onto part **C**. The orientation of the pump is dictated by the shape of **C**.

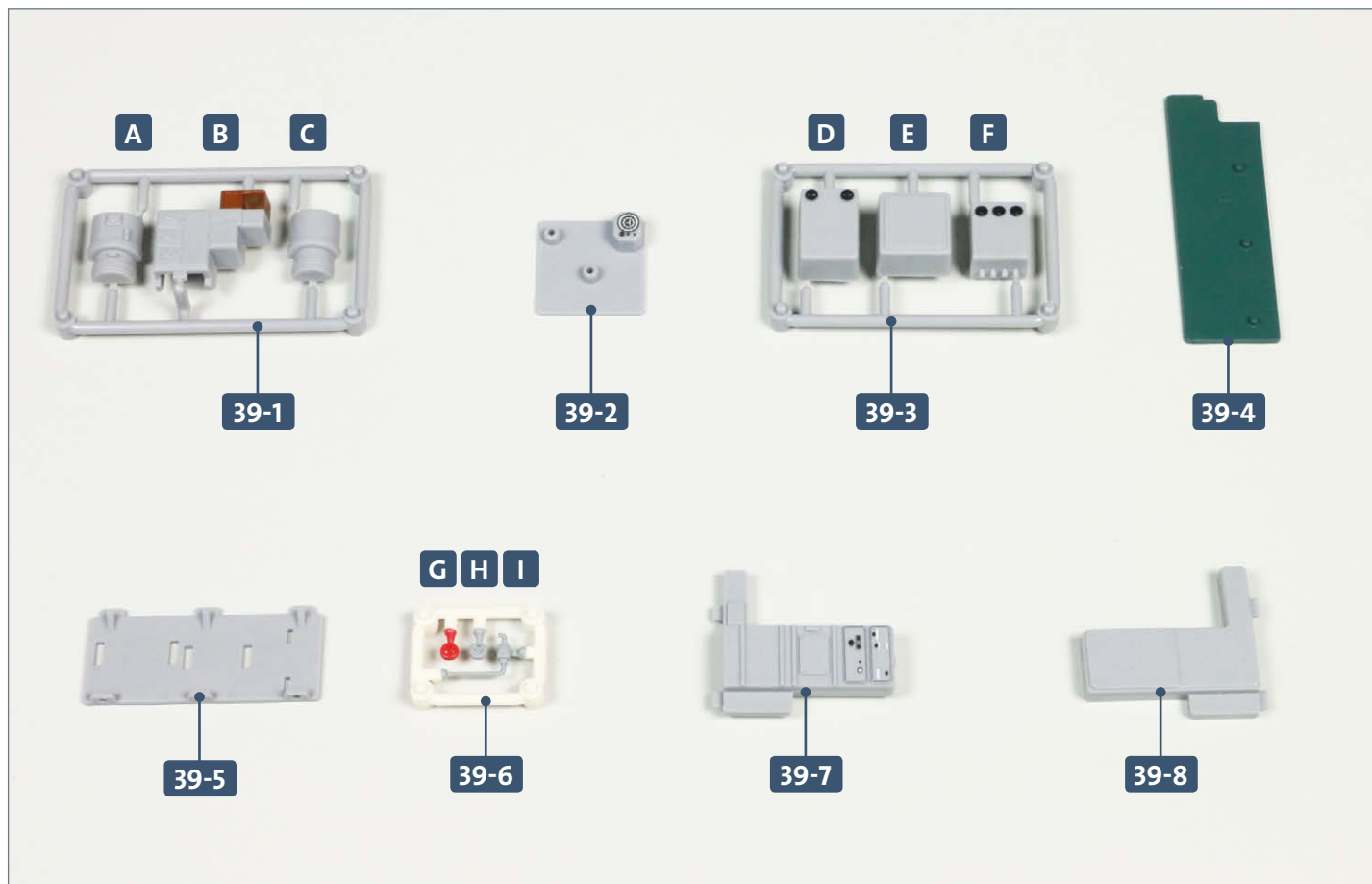
### COMPLETED WORK



The first elements have been added to the command room deck. The main bilge pump, and the flood and bilge distributor valves for the main and auxiliary bilge pumps have also been added.

# Kit 39: Navigation table

A number of items are attached to the command room deck, including a switch box, the central periscope winch, lockers, a navigation table and map box beneath, the periscope sight and fire selector switch.

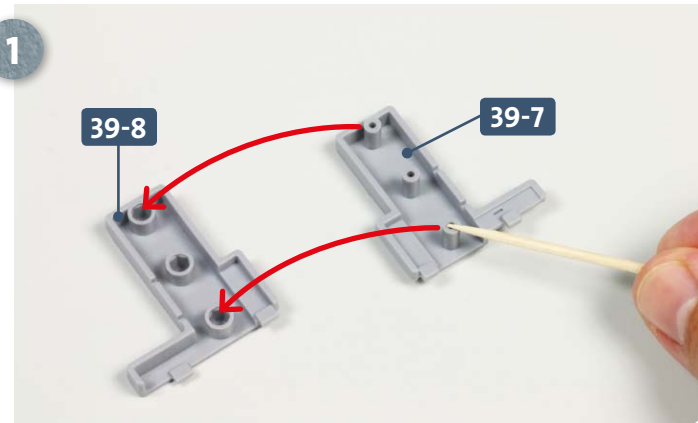


## Parts reference list

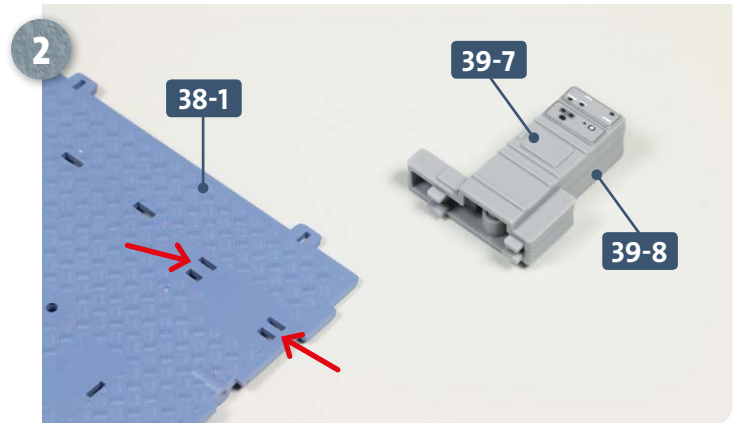
Part no.	Name
39-1	Frame (A, B, C)
39-2	Back plate with echo sounder
39-3	Frame (D, E, F)
39-4	Navigation table
39-5	Mounting plate
39-6	Frame (G, H, I)
39-7	Switch box (front)
39-8	Switch box (back)

## Kit 39: Navigation table

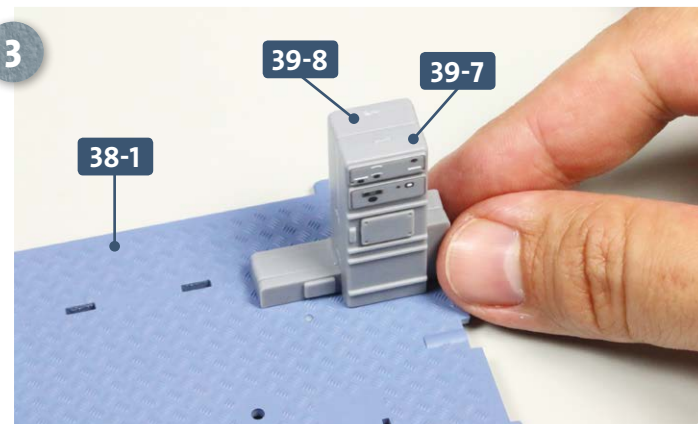
### STAGE 1 → Furnishing the command room



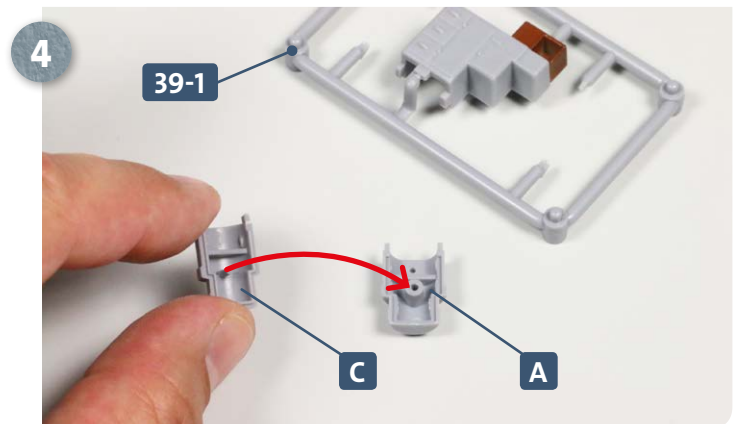
1 Place the two halves of the switch box **39-7** and **39-8** on your work surface, outer sides facing down. Apply some glue to the contact surfaces, as indicated by the arrows.



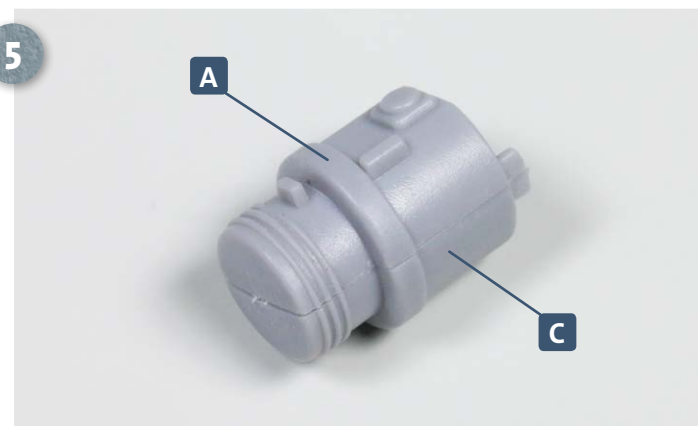
2 After gluing the two halves together, the switch box **39-7/39-8** assembly is then glued to the command room deck **38-1**. The four pegs on the bottom of the box fit into the deck in the slots shown by the arrows.



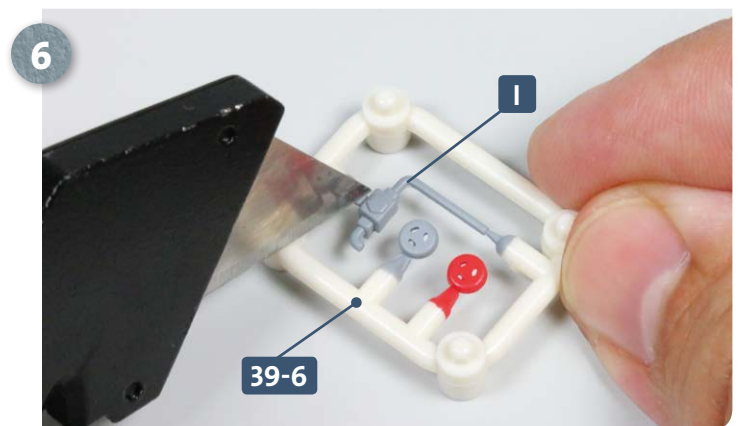
3 Apply some glue to the four pegs of **39-7/39-8** and fix it to the command room deck **38-1**.



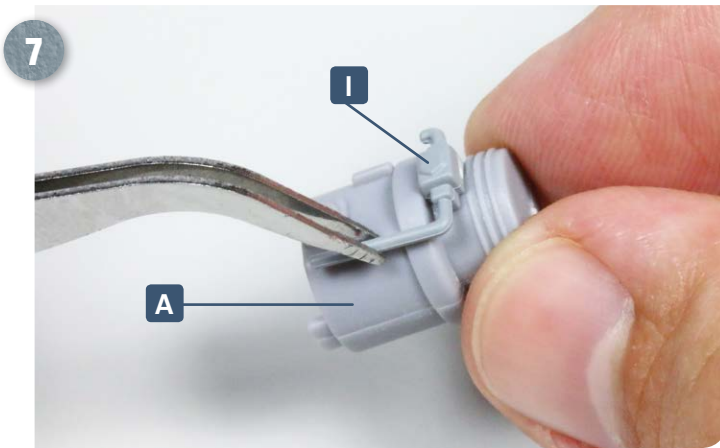
4 Take frame **39-1** and detach the two parts of the central periscope **A** and **C**. Add some glue to the contact surfaces and fit together as pictured above.



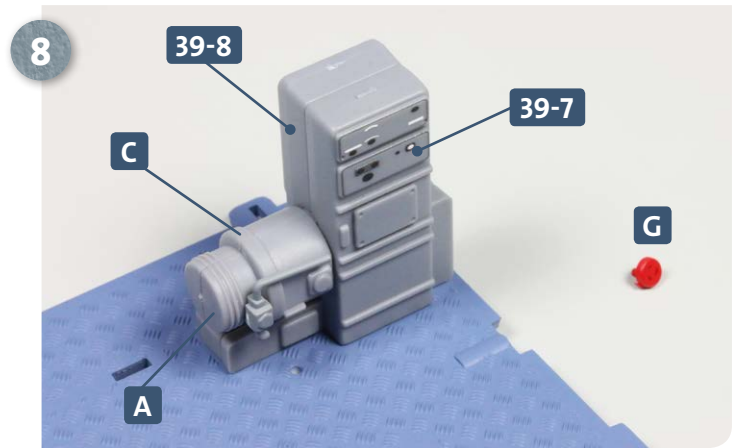
5 The above photograph shows the assembled parts of the periscope winch, **A** and **C**.



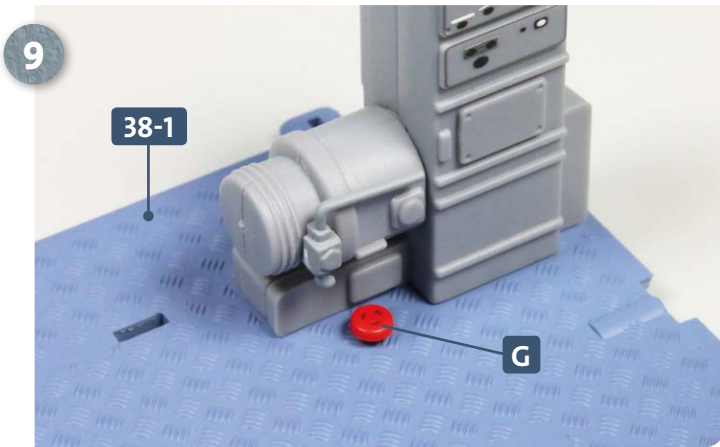
6 Remove part **I** from frame **39-6** and, as usual, smooth any rough edges, if required.



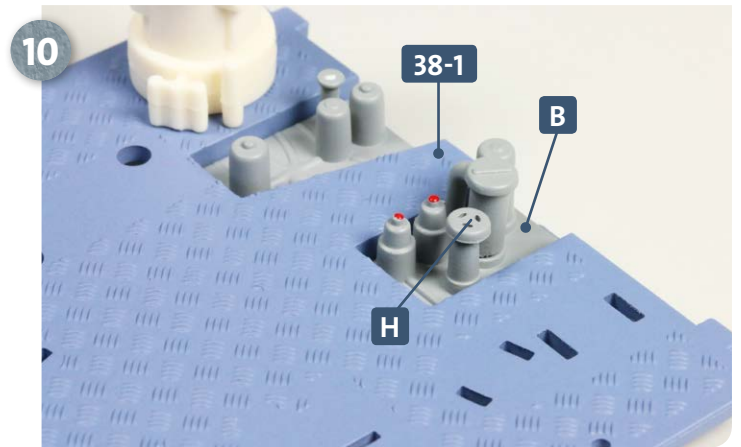
Apply some glue to the peg on part **A** and fit the recess in part **I** over it, as shown above.



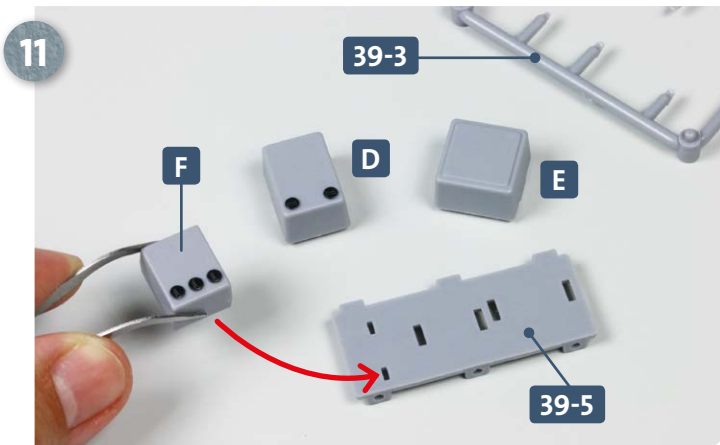
Apply some glue to the two pegs of the periscope winch **A/C** and fit these into the two slots in the switch box assembly **39-7/39-8**, as shown. Remove handwheel **G** from frame **39-6**.



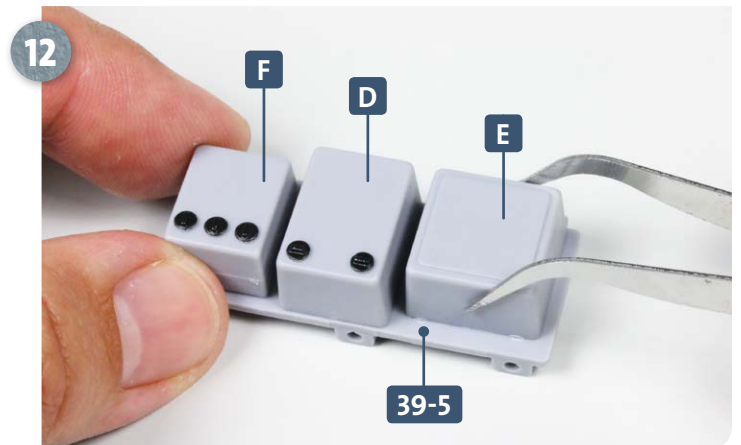
Glue handwheel **G** in front of the switch box, in the hole in the deck **38-1**, as shown.



We now switch to working at the aft end of the command room deck **38-1**. Remove handwheel **H** from frame **39-6** and glue it to the top of the flood and bilge valve **B** that was added in kit 38.



Take the mounting plate **39-5**. Separate the three parts from frame **39-3**: the periscope sight **D**, the map box **E** and the fire selector switch **F**. Apply some glue to the pegs of **F** and insert into the corresponding slots in the mounting plate.

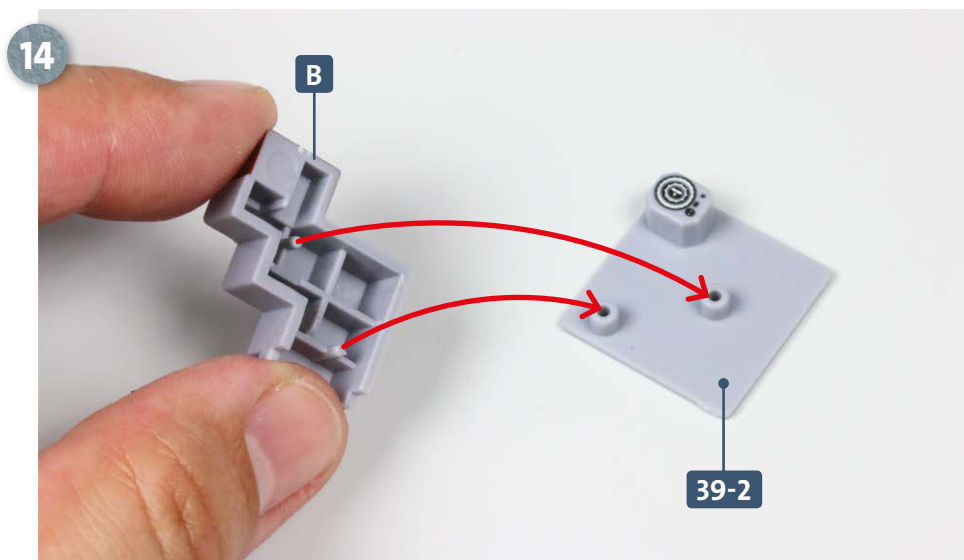


Glue the periscope sight **D** and map box **E** to the mounting plate **39-5** next to **F**.

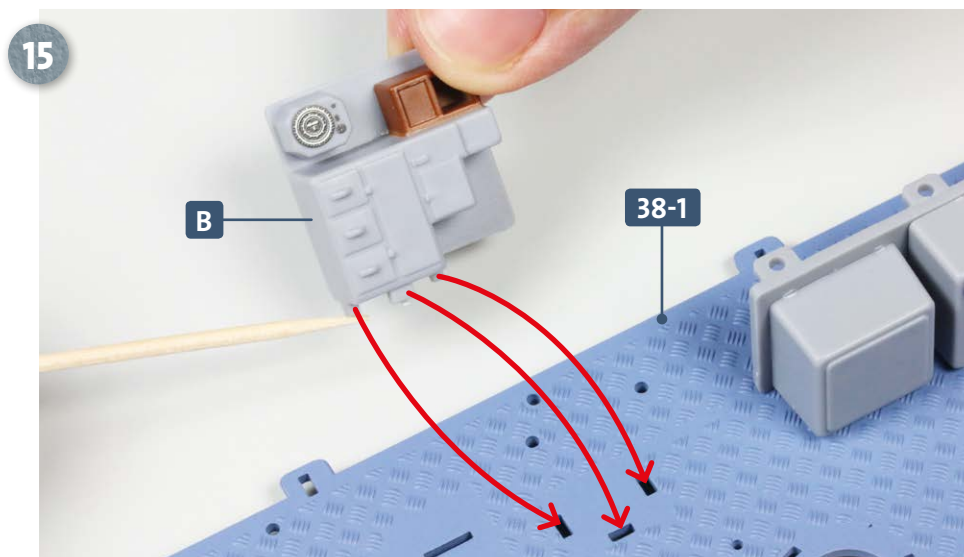
## Kit 39: Navigation table



Turn over the mounting plate **39-5**, apply some glue to the three pegs underneath, and fit these into the corresponding slots in the command room deck **38-1**, as shown.

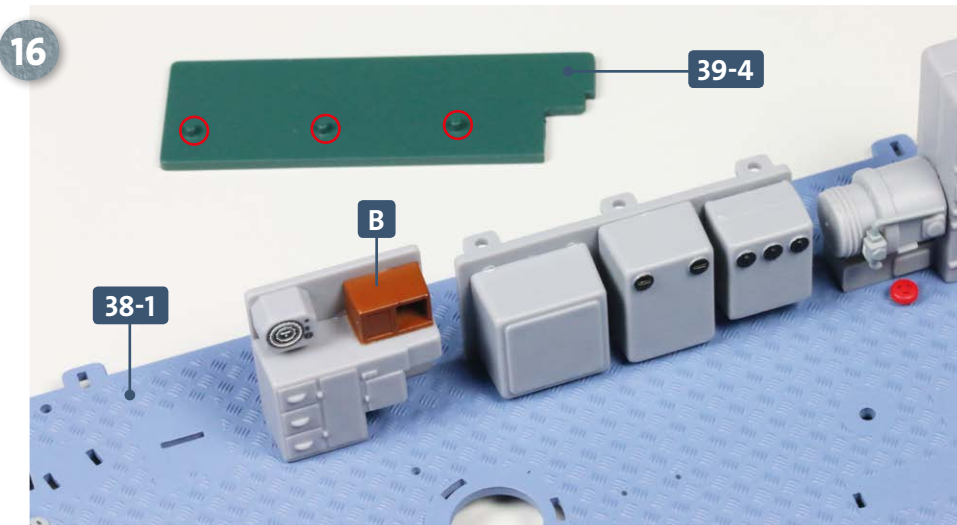


Take the back plate with the echo sounder **39-2**. Detach the lockers **B** from frame **39-1** and apply some glue to the two pegs and fix it to the back plate **39-2**, as shown by the arrows.

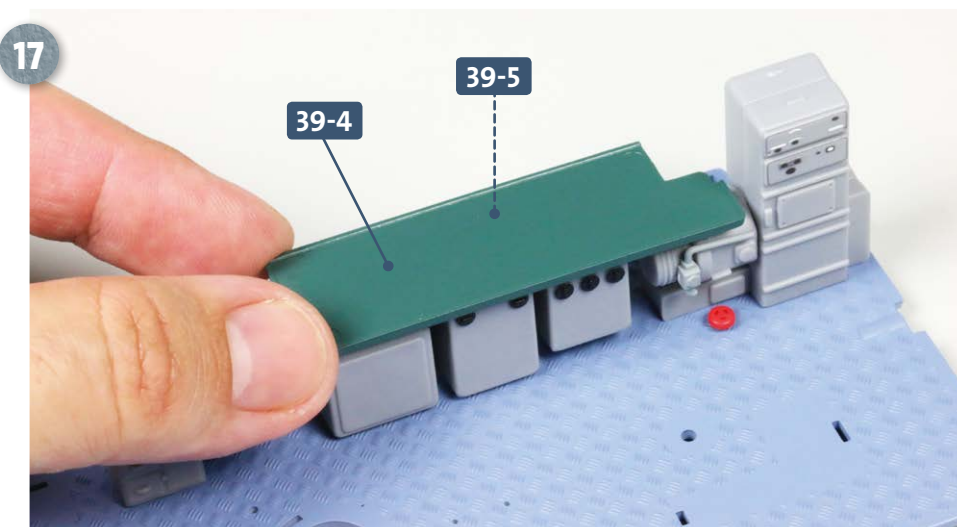


Apply some glue to the three pegs on the underside of the locker **B** and insert these into the three corresponding slots in the command room deck **38-1**, as indicated by the arrows.

## Kit 39: Navigation table

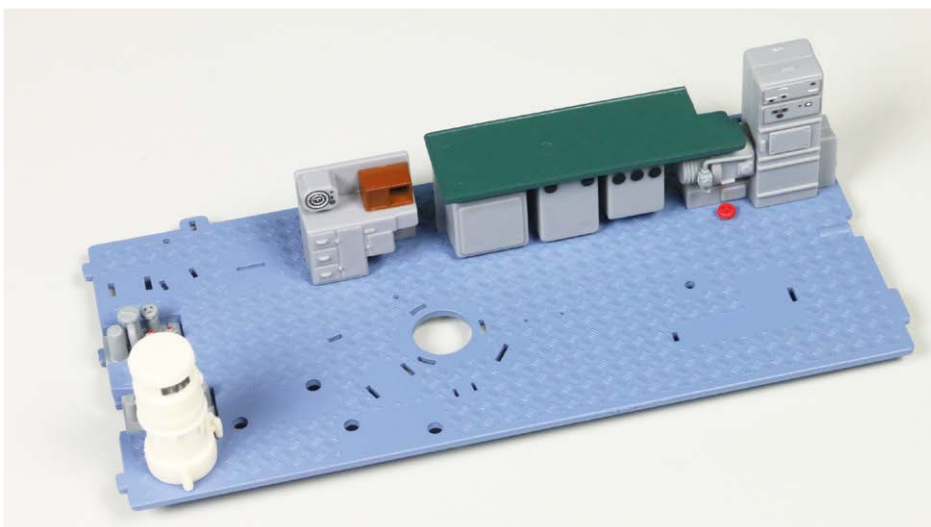


Place the navigation table 39-4 bottom-side facing up on your work surface. Apply some glue to the three pegs (circled).



Insert the glued pegs of the navigation table 39-4 into the corresponding holes at the top of the mounting plate 39-5.

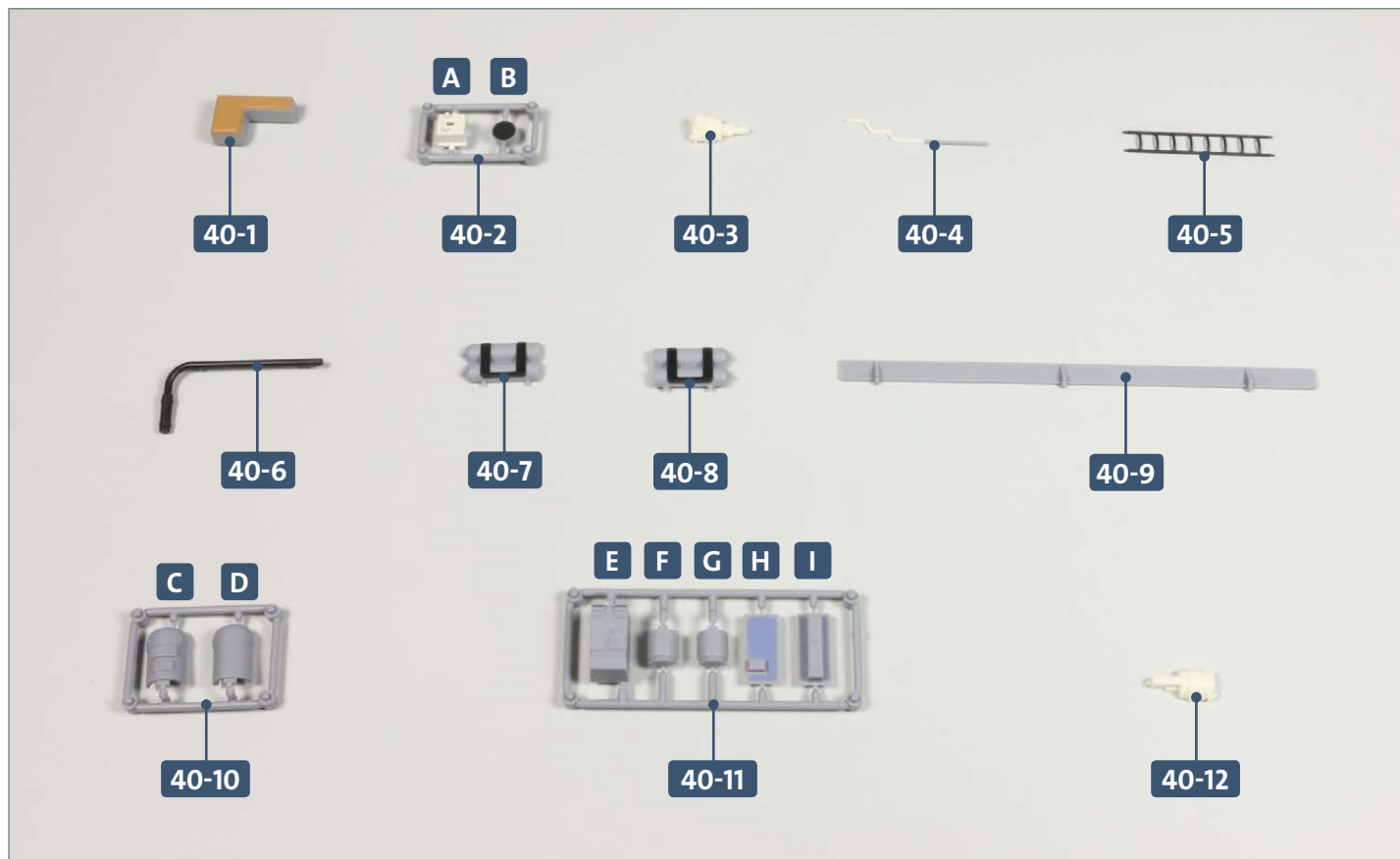
## COMPLETED WORK



Work continues on the command room with the addition of the navigation table and related items, lockers, an echo sounder, switch box and periscope winch control.

# Kit 40: Auxiliary bilge pump

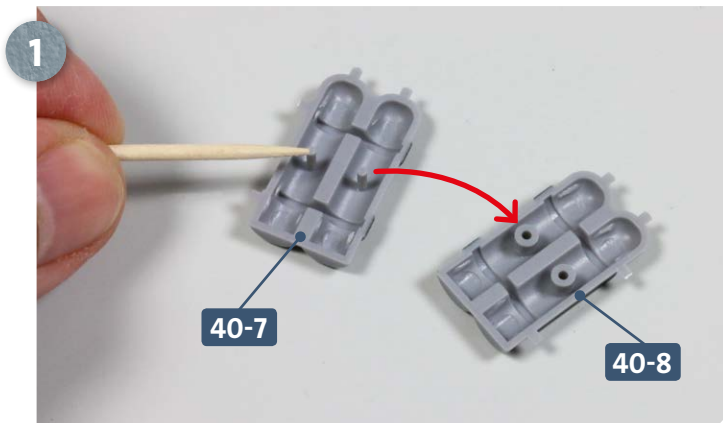
In this kit, additional components are installed in the command room, including the auxiliary bilge pump, fresh water generator, main gyrocompass, compressed air bottles, a ladder and the central shaft.



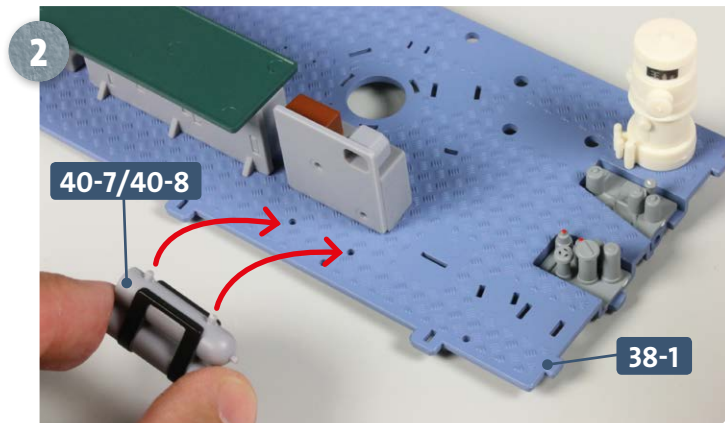
## Parts reference list

Part no.	Name
40-1	Helmsman's seat
40-2	Frame with auxiliary bilge pump base and central shaft pipe (A, B)
40-3	Auxiliary bilge pump (front)
40-4	Pipe
40-5	Ladder
40-6	Pressure hose
40-7	Compressed air bottles
40-8	Compressed air bottles
40-9	Edge part
40-10	Frame with main gyrocompass (C, D)
40-11	Frame with fresh water generator parts (E, F, G, H, I)
40-12	Auxiliary bilge pump (back)

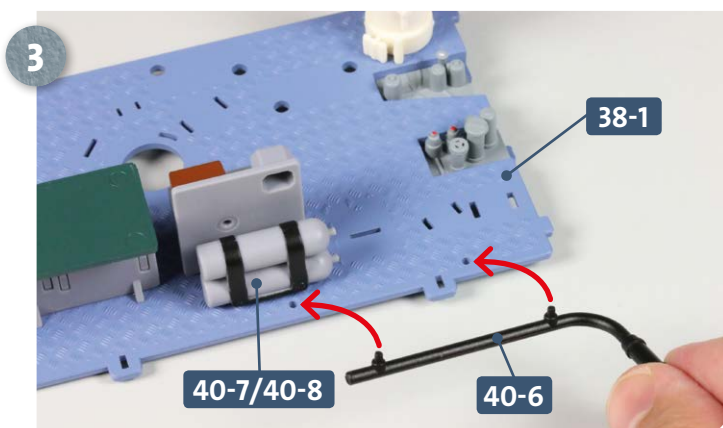
**STAGE 1** → Additional command room furnishings



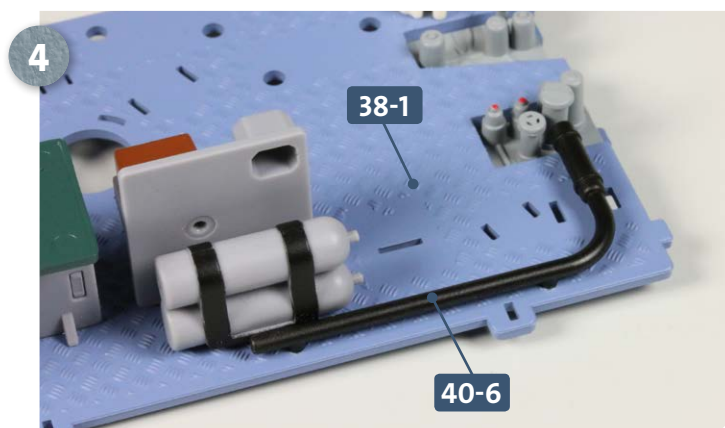
Place the two halves of the compressed air bottles **40-7** and **40-8** on your work surface. Apply some glue to the pegs of **40-7** and insert into the holes in **40-8**, as indicated by the arrows.



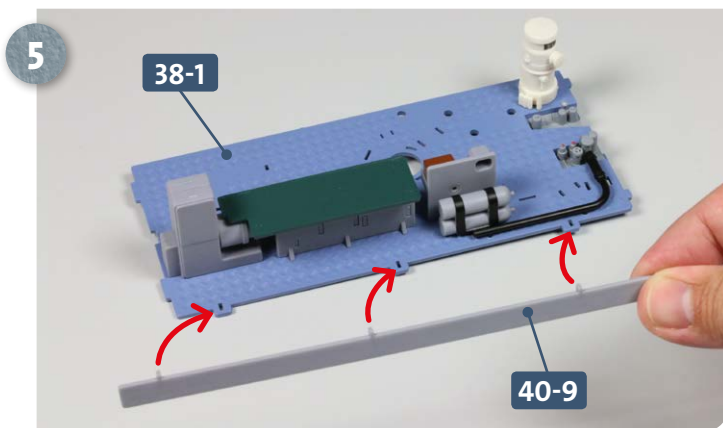
Now apply a little glue to the two outer pegs of the compressed air bottles **40-7/40-8** and insert these into the corresponding holes in the command room deck **38-1**, as shown by the arrows.



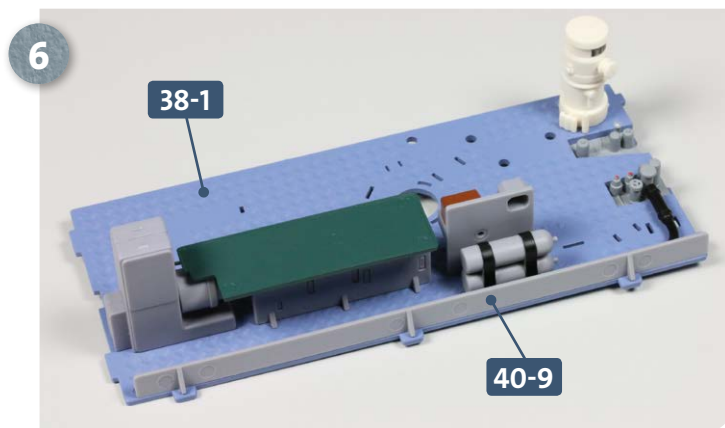
Apply some glue to the two pegs of the pressure hose **40-6** and insert these into the holes in the command room deck **38-1**, as indicated by the arrows.



The photograph shows the pressure hose **40-6** attached to the command room deck **38-1**.



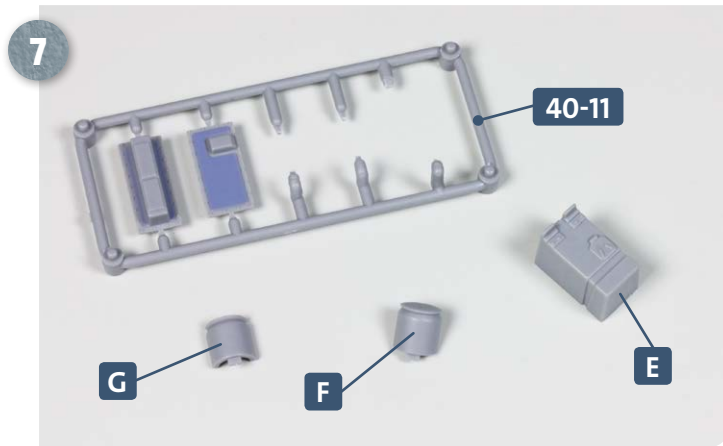
Apply some glue to the three pegs of the edge part **40-9** and fit these into the slots along the side of the command room deck **38-1**, shown by the arrows.



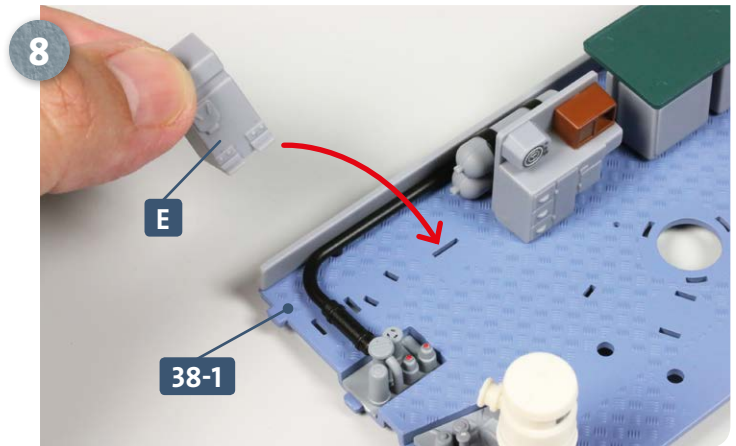
The photograph shows the edge part **40-9** fitted to the command room deck **38-1**.



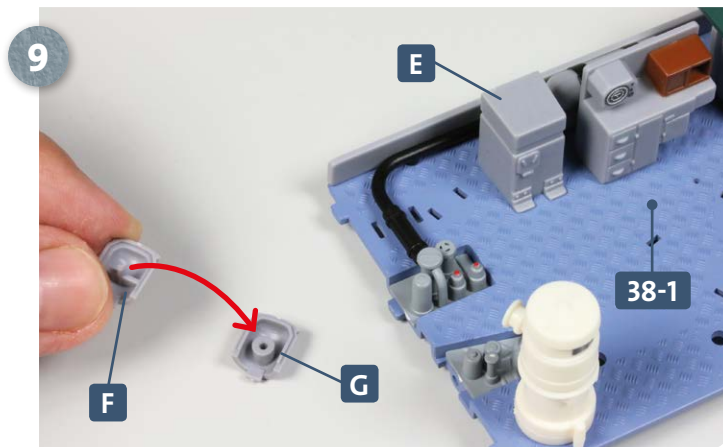
## Kit 40: Auxiliary bilge pump



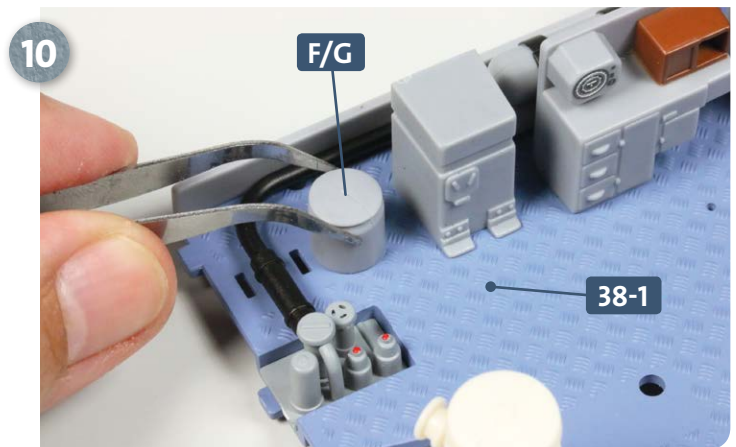
Take frame **40-11** and detach parts **E**, **F** and **G**. If necessary, remove any trace of the frame connection points on each of the parts.



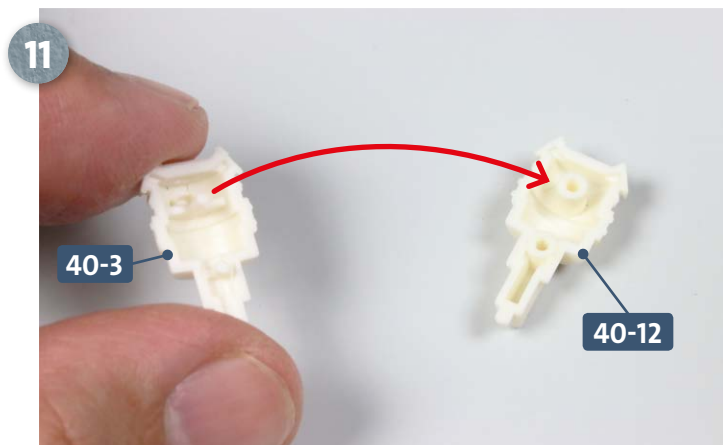
Apply some glue to the tab at the bottom of **E** and insert it into the slot in the command room deck **38-1**, as shown by the arrow.



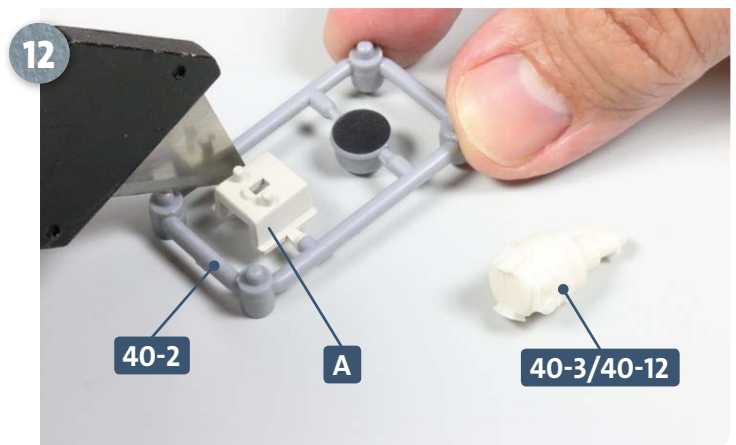
Now apply some glue to the inner peg of **F** then join it to part **G**, as shown above.



Apply some glue to the two pegs on the underside of **F/G** and insert into the slots in the command room deck **38-1**, as shown.

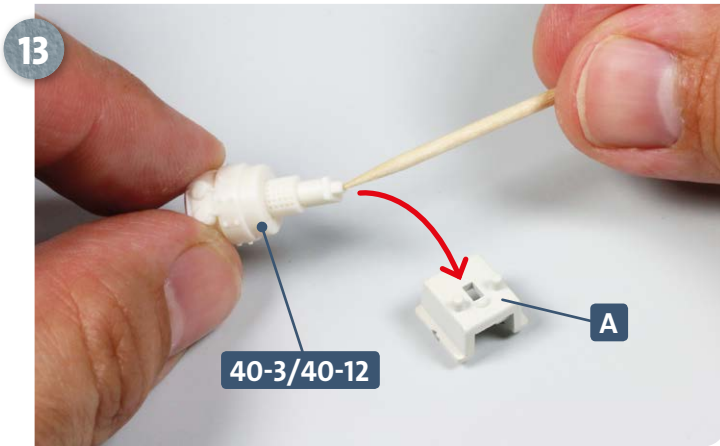


The auxiliary bilge pump consists of two parts: **40-3** and **40-12**. Apply some glue to the contact surfaces of each, before fitting them together.

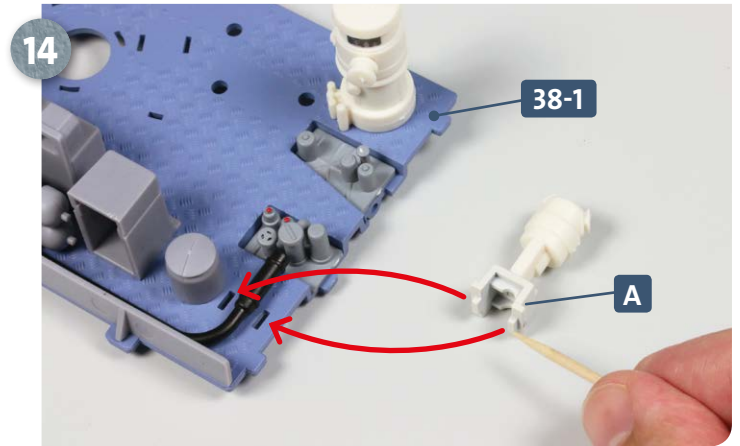


The auxiliary bilge pump **40-3/40-12** is assembled. Next separate the base **A** from frame **40-2**.

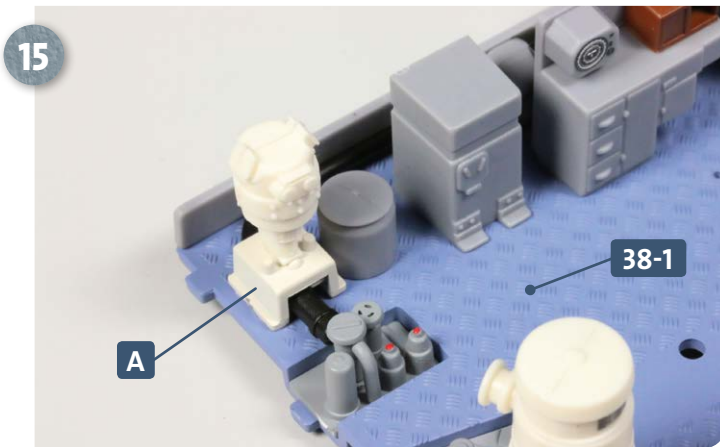
## Kit 40: Auxiliary bilge pump



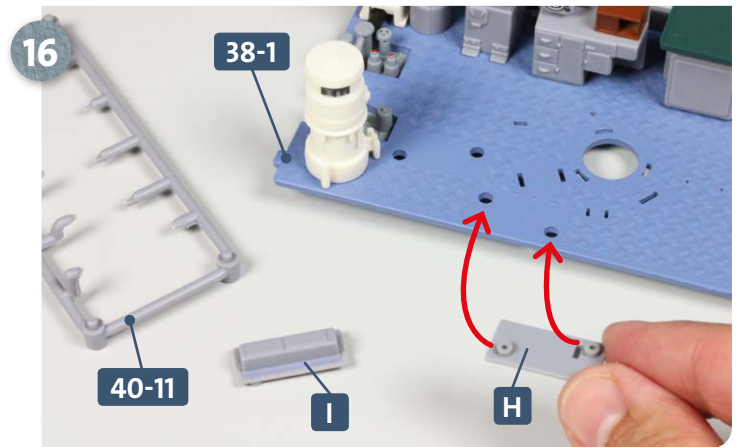
Apply some glue to the peg at the bottom of the auxiliary bilge pump 40-3/40-12. Insert this into the opening in the base, A.



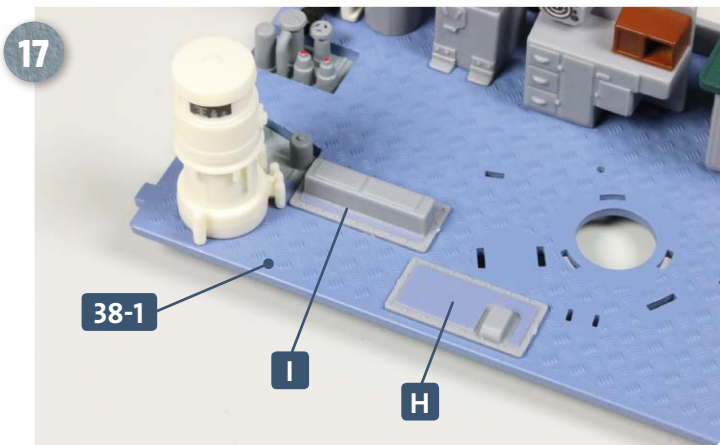
Apply some glue to the two pegs of the base, A. These are inserted into the corresponding slots in the command room deck 38-1, as indicated by the arrows.



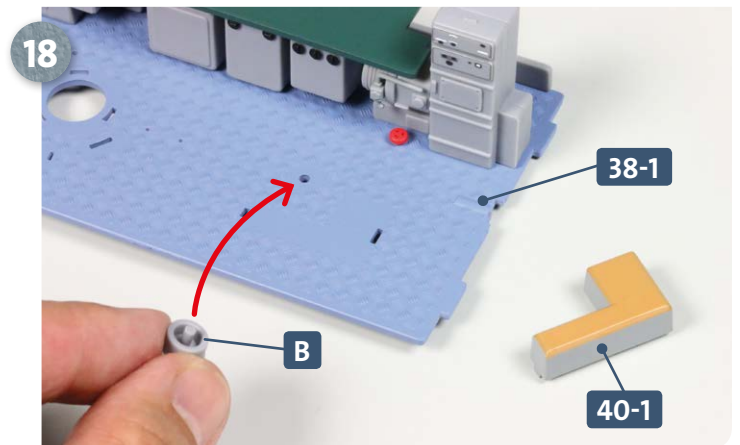
The photo shows the base A attached to the command room deck 38-1: observe the correct orientation of the auxiliary bilge pump.



Separate parts H and I from frame 40-11. Apply some glue to both pegs on the bottom of part H and insert these into the corresponding holes in the deck 38-1, shown by the arrows.

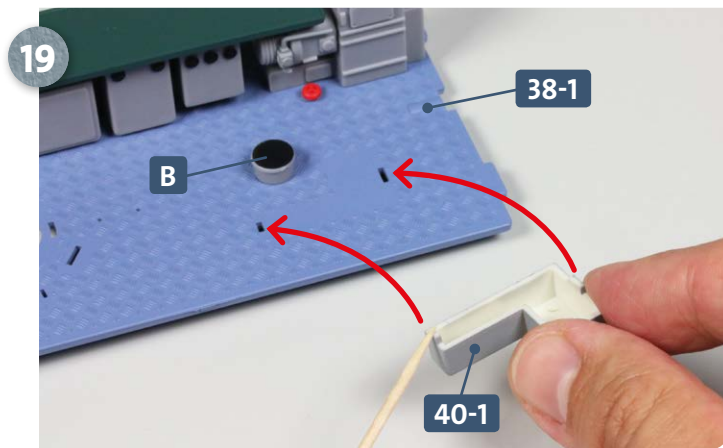


Part I is glued to the deck 38-1 next to H: add some glue to the pegs and insert into the corresponding holes.

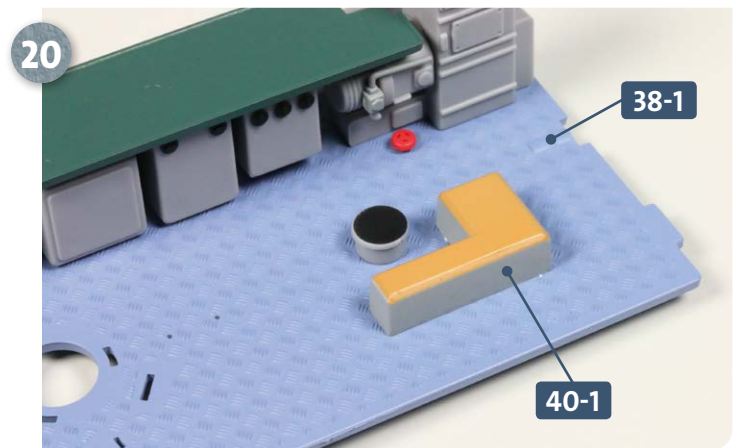


Take the helm's seat 40-1. Detach the central viewing tube B from frame 40-2 and glue it into the hole in the command room deck, indicated by the arrow.

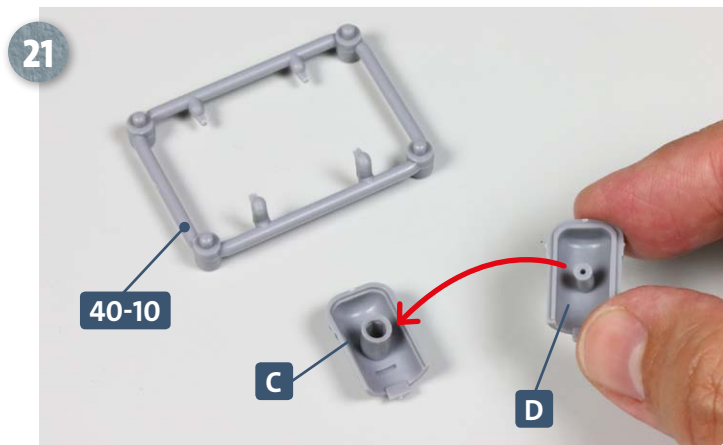
## Kit 40: Auxiliary bilge pump



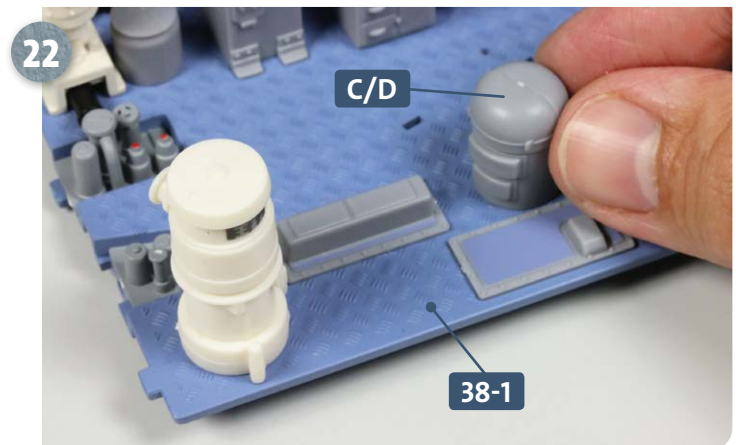
Next, apply some glue to the pegs on the underside of the bench seat **40-1** and insert it into the deck in the slots shown above.



This photograph shows the helmsman's seat **40-1** attached to the command room deck **38-1**.

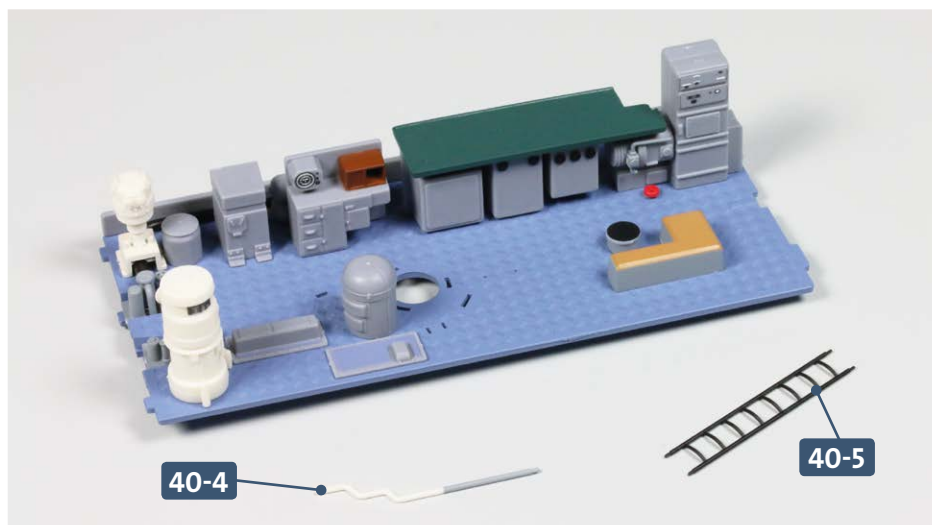


Separate the two halves of the main gyrocompass, **C** and **D**, from frame **40-10**. Glue the two pieces together, as indicated.



Apply some glue to the two pegs of the main gyrocompass assembly **C/D** and insert into the corresponding slots in the command room deck **38-1**, as shown.

## COMPLETED WORK



The command room compartment is taking shape: various assemblies have been attached to the deck in this kit to join those previously installed. The pipe (**40-4**) and ladder (**40-5**) received with this kit are not needed until later in the build, so keep these parts somewhere safe.